




# Co-Writing Screenplays & Theatre Scripts with Language Models

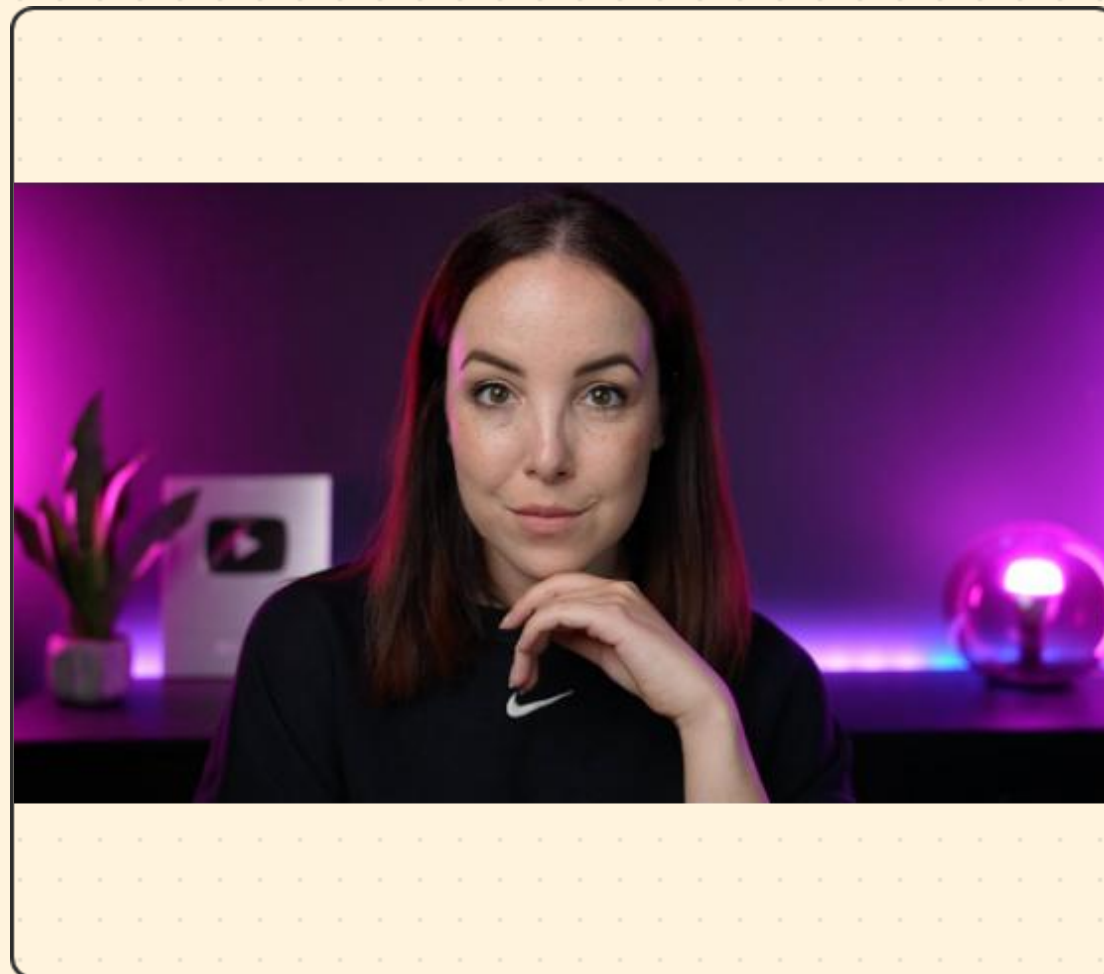
Paper: Mirowski et al., CHI 2023

**Presented by: Patibandla Bharath Narasimha**

# Motivation: Why this research?

---

-  **LLMs in Creativity:** Artificial intelligence is increasingly used for creative writing assistance.
-  **The Coherence Gap:** Standard models struggle with long-range consistency (characters, plot arcs) over many pages.
-  **Writer Needs:** Professionals want tools that work *with* them, not just black-box generators.



# What is Dramatron?

---

A hierarchical text-generation system that builds scripts layer by layer using **Prompt Chaining**.



## 1. Title

Generates a catchy title based on the logline.



## 2. Characters

Detailed descriptions and personality traits.



## 3. Plot Grid

Scene-by-scene outline with beat descriptions.



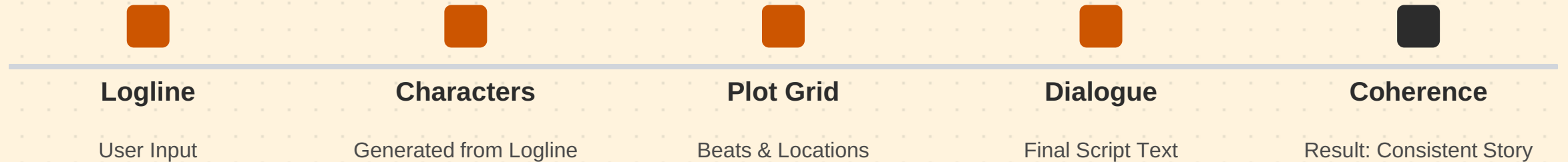
## 4. Dialogue

Script text generated for each specific scene.

# Why Hierarchical Generation?

---

LLMs have limited context windows. Dramatron solves this by generating structure top-down.



# Interactive Co-Writing Workflow

---

Dramatron is not a "one-click" generator. It is an interactive tool for exploration.



**Request Alternatives:** Generate multiple versions of characters or scenes.



**Human-in-the-Loop:** Edit outputs at every level before moving to the next.



**Regenerate:** Rewrite sections using the user's manual edits as context.



**Navigate Hierarchy:** Move backward to fix plot points or forward to detail.



# Study Design

---

**15**

**Participants**

Theatre & Film Professionals  
(Writers, Directors, Producers)

**2**

**Hours**

Co-writing Session per Participant  
+ Interviews & Surveys



**Performance**

"Plays By Bots"  
Edmonton Fringe Festival

# Qualitative Findings: Strengths

---

## Inspiration

Helps overcome writer's block. Participants described it as putting "meat on the bones" that they could refine. It was highly valued for world-building and exploring alternative character traits.

## Structure

Writers praised the hierarchical structure, appreciating the ability to see the full narrative arc before diving into dialogue. It enabled the rapid production of draft text suitable for staging.

# Quantitative Survey Results

---



*Note: While engagement was high, many participants felt low ownership of the raw generated text.*



# Weaknesses Identified

---



## LLM Limits

Lack of deep coherence, repetition loops, and weak character motivations.



## Stereotypes

Gender bias, predictable clichés, and overly literal naming conventions.






## Dependency

Heavy reliance on the initial logline; scenes sometimes contradict each other.

# Ethical Considerations

---

-  **Plagiarism & Copyright:** Concerns about prompt sets being based on existing works (e.g., Medea) and ownership of AI text.
-  **Bias & Representation:** Stereotypes encoded in the LLM training data can lead to harmful or cliché representations.
-  **Cultural Appropriation:** Risk of generating content that mimics cultures without understanding or respect.

# Impact & Contribution

---

- ✓ Introduced **Dramatron**, a novel hierarchical system.
- ✓ Conducted a large **expert study** with professionals.
- ✓ Demonstrated **real-world value**; scripts were successfully staged.
- ✓ Provided insights into **co-creative tool design**.





# Conclusion

Dramatron is a powerful tool for idea generation and structure.

While LLMs struggle with nuance, the hierarchical approach improves coherence.

**The future is Co-Creative.**